





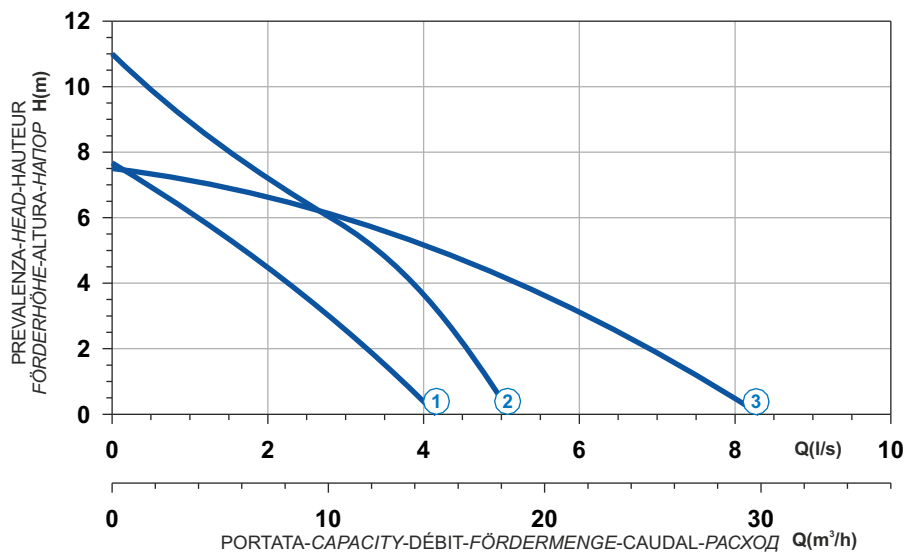


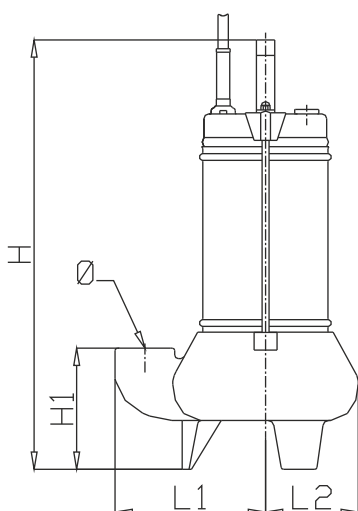
- | | |
|--|---|
|  Acciaio inox e ghisa |  Stainless steel and cast iron |
|  Acier inoxydable et fonte |  Edelstahl und Grauguss |
|  Acero inox y hierro fundido |  Нержавеющая сталь и чугун |

Curva caratteristica - Performance curve - Courbe caractéristique
Kennlinie - Curva característica - Характеристическая кривая

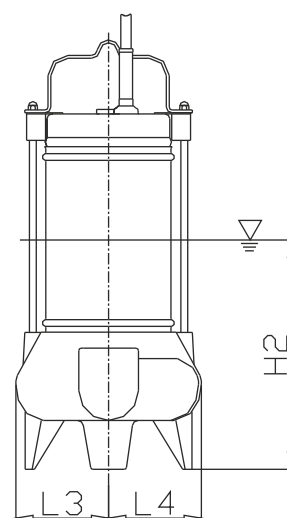
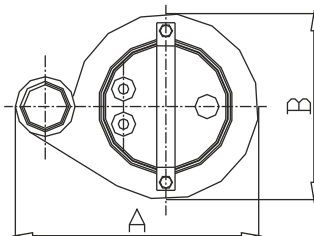


Curve N°	Code	Type	MOTOR				Free passage (mm)	Discharge	Weight (Kg)
			Power supply	R.P.M.	Rated power P2 (kW)	Rated current I (A)			
1	8004807	LVG-06T0-32	3ph 400V 50Hz	2850	0,58	1,1	35	1"1/4	10,5
2	8002322	LVG-09T0-32	3ph 400V 50Hz	2850	0,9	1,8	30	1"1/4	12,5
3	8000704	LVG-09T0-50	3ph 400V 50Hz	2850	0,9	1,8	40	2"	14

Dimensioni - Dimensions - Dimensions - Abmessungen - Dimensiones - Габариты (mm)



▽ LIVELLO MINIMO DI SOMMERGIBILITÀ
MINIMUM SUBMERSIBLE LEVEL
NIVEAU MINIMUM D'IMMERSION
MINDESTWASSERSTAND
NIVEL SUMERGIBLE MÍNIMO
МИНИМАЛЬНАЯ ГЛУБИНА ПОГРУЖЕНИЯ



Curve	Code	Type	H	H1	H2	A	B	Ø	L1	L2	L3	L4
1	8004807	LVG-06T0-32	370	105	200	213	160	1"1/4	133	80	80	80
2	8002322	LVG-09T0-32	410	105	215	213	160	1"1/4	133	80	80	80
3	8000704	LVG-09T0-50	430	120	225	270	190	2"	175	95	95	95